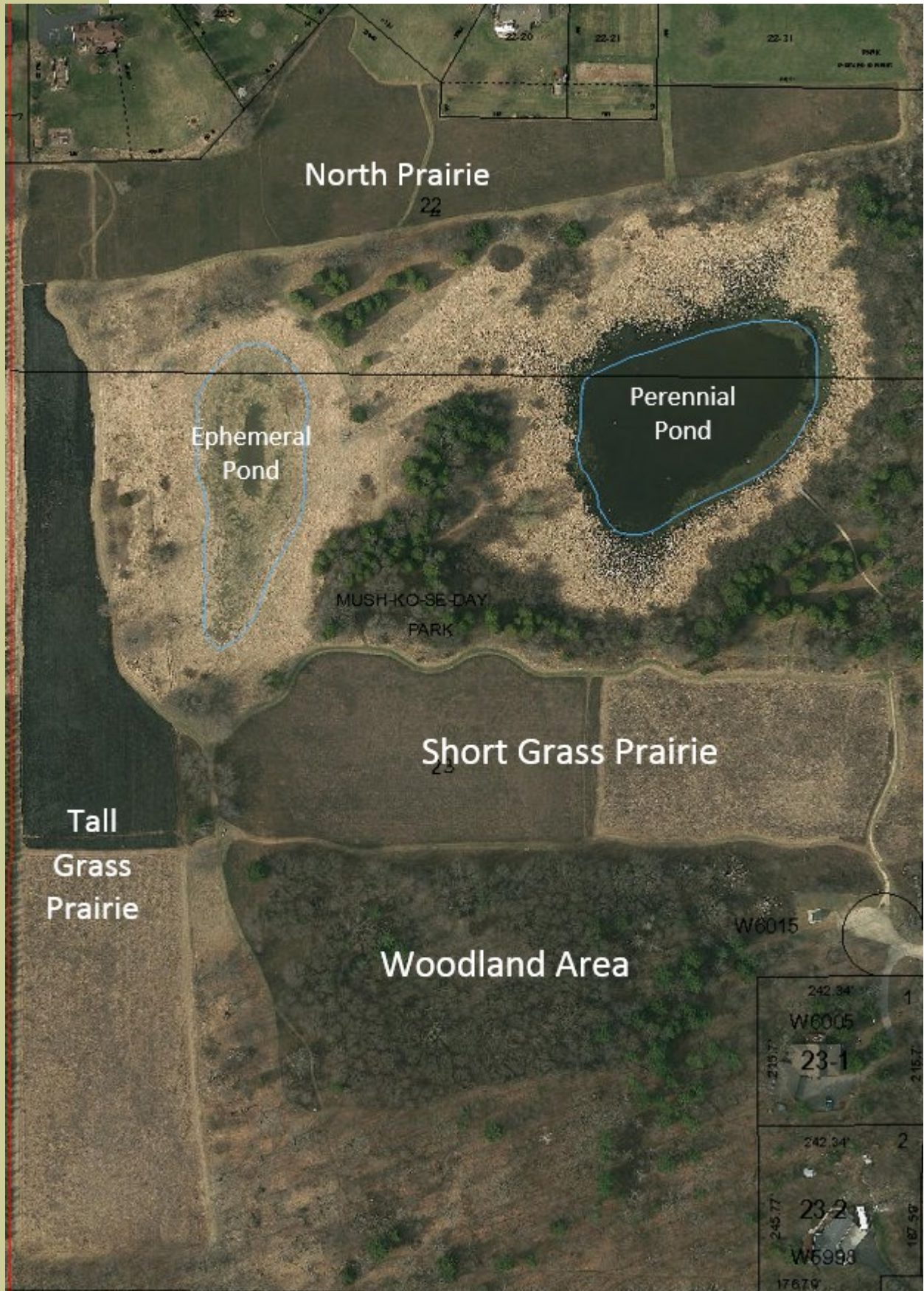


# Mush-Ko-Se-Day Park—Plantings List



# Mush-Ko-Se-Day Park—Plantings List

## Short Grass Prairie

Scientific Name	Common Name
Agastache foeniculum	Lavender Hyssop (Anise)
Coreopsis lanceolata	Lanceleaf Coreopsis
Heliopsis helianthoides	Sunflower - Early (Ox-eyed)
Monarda fistulosa	Bergamot, Wild
Rudbeckia hirta	Black-eyed Susan (Sponsored)
Rudbeckia subtomentosa	Sweet Black-Eyed Susan
Solidago rigida	Golderron, Stiff
Tradescantia ohiensis	Spiderwort, Ohio
Andropogon scoparius	Little Bluestem
Bouteloua curtipendula	Side-oats Grama
Elymus canadensis	Canada Wild Rye
Sorghastum nutans	Indian Grass

## Tall Grass Prairie

Scientific Name	Common Name
Aster azureus	Sky Blue Aster (Sponsored)
Astragalus canadensis	Canada Milk Vetch
Baptisia leucantha	Indigo, White Wild
Desmodium canadense	Showy Tick Trefoil (Canada)
Echinacea purpurea	Coneflower, Purple
Heliopsis helianthoides	Sunflower - Early (Ox-eyed)
Liatris pycnostachya	Blazing Star, Prairie
Monarda fistulosa	Bergamot, Wild
Penstemon digitalis	Beardtongue, Foxglove
Ratibida pinnata	Coneflower, Yellow Grey
Rudbeckia hirta	Black-eyed Susan (Sponsored)
Silphium integrifolium	Rosin Weed (Sponsored)
Silphium laciniatum	Compass Plant
Silphium perfoliatum	Cup Plant
Silphium terebinthinaceum	Prairie Dock
Solidago rigida	Goldenrod, Stiff
Veronia fasciculata	Ironweed, Common
Andropogon gerardii	Big Bluestem
Elymus canadensis	Canada Wild Rye
Panicum virgatum	Switch Grass
Sorghastrum nutans	Indian Grass

# Mush-Ko-Se-Day Park—Plantings List

## Short Grass Prairie

Scientific Name	Common Name
<i>Allium cernuum</i>	Nodding Pink Onion
<i>Amorpha canescens</i>	Lead Plant (Sponsored)
<i>Asclepias tuberosa</i>	Butterfly Weed (Sponsored)
<i>Aster asureus</i>	Sky Blue Aster
<i>Aster ericoides</i>	Heath Aster
<i>Aster laevis</i>	Smooth Blue Aster
<i>Aster novae-angliae</i>	New England Aster
<i>Aster ptarmicoides</i>	White Aster (Sponsored)
<i>Astragalus canadensis</i>	Canada Milk Vetch
<i>Baptisia leucantha</i>	Indigo, White Wild
<i>Ceanothus americanus</i>	New Jersey Tea (Buckthorn)
<i>Coreopsis tripteris</i>	Tall Coreopsis
<i>Desmodium canadense</i>	Showy Tick Trefoil (Canada)
<i>Dodecatheon meadia</i>	Shooting Star - Midland
<i>Echinacea pallida</i>	Coneflower - Pale Purple
<i>Echinacea purpurea</i>	Coneflower, Purple
<i>Eryngium yuccifolium</i>	Rattlesnake Master
<i>Helianthus occidentalis</i>	Sunflower - Western
<i>Liatris aspera</i>	Blazing Star, Rough (Button)
<i>Liatris pycnostachya</i>	Blazing Star, Prairie
<i>Lupinus perennis</i>	Lupine, Wild (Sponsored)
<i>Monarda punctata</i>	Bee Balm, Spotted (Mint)
<i>Parthenium integrifolium</i>	Wild Quinine
<i>Penstemon digitalis</i>	Beardtongue, Foxglove
<i>Penstemon grandiflorus</i>	Beardtongue, Large-flowered
<i>Petalostemum candidum</i>	Clover, White Prairie
<i>Petalostemum purpureum</i>	Clover, Purple Prairie
<i>Ratibida pinnata</i>	Coneflower, Yellow (Grey-head)
<i>Ruellia humilis</i>	Petunia, Wild
<i>Silphium integrifolium</i>	Rosin Weed
<i>Silphium laciniatum</i>	Compass Plant
<i>Silphium perfoliatum</i>	Cup Plant
<i>Silphium terebinthinaceum</i>	Prairie Dock
<i>Solidago speciosa</i>	Goldenrod, Showy (Sponsored)
<i>Verbena stricta</i>	Vervain, hoary
<i>Zizia aurea</i>	Alexanders, Golden
<i>Koeleria cristata</i>	June Grass
<i>Sporobolus heterolepis</i>	Prairie Dropseed

# Mush-Ko-Se-Day Park—Plantings List

## North Prairie

Scientific Name	Common Name
<i>Agastache foeniculum</i>	Lavender Hyssop (Anise)
<i>Allium cernuum</i>	Nodding Pink Onion
<i>Artemisia ludoviciana</i>	White Prairie Sage
<i>Aster novae-angliae</i>	new England Aster
<i>Astragalus canadensis</i>	Canada Milk Vetch
<i>Baptisia australis</i>	Indigo, Blue Wild
<i>Cassia fasciculata</i>	Partridge Pea
<i>Cassia hebecarpa</i>	Senna, Wild
<i>Coreopsis lanceolata</i>	Lanceleaf Coreopsis
<i>Coreopsis palmata</i>	Prairie Coreopsis (Palm-leaves)
<i>Desmodium illinoense</i>	Illinois Tick Trefoil
<i>Echinacea pallida</i>	Coneflower - Pale Purple
<i>Echinacea purpurea</i>	Coneflower, Purple
<i>Heliopsis helianthoides</i>	Sunflower - Early (Ox-eyed)
<i>Hypericum punctatum</i>	St. Johns Wort - dotted
<i>Liatris pycnostachya</i>	Blazing Star, Prairie
<i>Lupinus perennis</i>	Lupine, Wild
<i>Monarda fistulosa</i>	Bergamot, Wild
<i>Penstemon digitalis</i>	Beardtongue, Foxglove
<i>Physostegia virginiana</i>	Obedient plant
<i>Ratibida pinnata</i>	Coneflower, Yellow
<i>Rudbeckia fulgida</i>	Coneflower, Orange
<i>Rudbeckia hirta</i>	Black-eyed Susan
<i>Rudbeckia laciniata</i>	Wild golden glow
<i>Rudbeckia subtomentosa</i>	Sweet Black-Eyed Susan
<i>Rudbeckia triloba</i>	Brown-eyed susan
<i>Silphium integrifolium</i>	Rosin Weed
<i>Silphium laciniatum</i>	Compass Plant
<i>Silphium perfoliatum</i>	Cup Plant
<i>Silphium terebinthinaceum</i>	Prairie Dock
<i>Solidago ohioensis</i>	Goldenrod, Ohio
<i>Solidago speciosa</i>	Goldenrod, Showy
<i>Tradescantia ohiensis</i>	Spiderwort, Ohio
<i>Veronia fasciculata</i>	Ironweed, Common
<i>Zizia aptera</i>	Alexanders, heart-leaf golden
<i>Zizia aurea</i>	Alexanders, Golden

# Mush-Ko-Se-Day Park—Plantings List

## Shrub Planting - Short Grass Prairie

Scientific Name	Common Name
Viburnum trilobum	American High Bush Cranberry Nanking Cherry
Viburnum lentage	nannyberry
Amelanchier	Serviceberry
Ilex verticillara	Winterberry
Prunus americana	Wild Plum
Physocarpus opulifolius	Nine/Bark Hazelnut or Filbert
Cornus racemosa	Grey Dogwood

## Shrub Planting - Short Grass Prairie

Scientific Name	Common Name
Cornus stolonifera	Red-osier Dogwood

## Wisconsin Grasses

Scientific Name	Common Name
Andropogon gerardii	Big Bluestem
Andropogon scoparius	Little Bluestem
Bouteloua curtipendula	Side-oats Grama
Bromus kalmii	Prairie Brome
Elymus canadensis	Canada Wild Rye
Panicum virgatum	Switch Grass
Sorghasteum mutans	Indian Grass
Sporobolus heterolepis	Prairie Dropseed

# Mush-Ko-Se-Day Park—Plantings List

## North Prairie

Scientific Name	Common Name
<i>Agastache foeniculum</i>	Lavender Hyssop (Anise)
<i>Allium cernuum</i>	Nodding Pink Onion
<i>Artemisia ludoviciana</i>	White Prairie Sage
<i>Aster novae-angliae</i>	new England Aster
<i>Astragalus canadensis</i>	Canada Milk Vetch
<i>Baptisia australis</i>	Indigo, Blue Wild
<i>Cassia fasciculata</i>	Partridge Pea
<i>Cassia hebecarpa</i>	Senna, Wild
<i>Coreopsis lanceolata</i>	Lanceleaf Coreopsis
<i>Coreopsis palmata</i>	Prairie Coreopsis (Palm-leaves)
<i>Desmodium illinoense</i>	Illinois Tick Trefoil
<i>Echinacea pallida</i>	Coneflower - Pale Purple
<i>Echinacea purpurea</i>	Coneflower, Purple
<i>Heliopsis helianthoides</i>	Sunflower - Early (Ox-eyed)
<i>Hypericum punctatum</i>	St. Johns Wort - dotted
<i>Liatris pycnostachya</i>	Blazing Star, Prairie
<i>Lupinus perennis</i>	Lupine, Wild
<i>Monarda fistulosa</i>	Bergamot, Wild
<i>Penstemon digitalis</i>	Beardtongue, Foxglove
<i>Physostegia virginiana</i>	Obedient plant
<i>Ratibida pinnata</i>	Coneflower, Yellow
<i>Rudbeckia fulgida</i>	Coneflower, Orange
<i>Rudbeckia hirta</i>	Black-eyed Susan
<i>Rudbeckia laciniata</i>	Wild golden glow
<i>Rudbeckia subtomentosa</i>	Sweet Black-Eyed Susan
<i>Rudbeckia triloba</i>	Brown-eyed susan
<i>Silphium integrifolium</i>	Rosin Weed
<i>Silphium laciniatum</i>	Compass Plant
<i>Silphium perfoliatum</i>	Cup Plant
<i>Silphium terebinthinaceum</i>	Prairie Dock
<i>Solidago ohioensis</i>	Goldenrod, Ohio
<i>Solidago speciosa</i>	Goldenrod, Showy
<i>Tradescantia ohiensis</i>	Spiderwort, Ohio
<i>Veronia fasciculata</i>	Ironweed, Common
<i>Zizia aptera</i>	Alexanders, heart-leaf golden
<i>Zizia aurea</i>	Alexanders, Golden
<i>Anemone patens</i>	Pasque Flower
<i>Angelica atropurpurea</i>	Angelica
<i>Aster azureus</i>	Sky Blue Aster